

**SAP Fact Sheet**  
**SAP Business One**



## **Warehouse and Production Management with SAP® Business One**

**Manage warehouses and inventory to optimize production, distribution, and storage cost with SAP Business One®.**

**Streamlined and optimized distribution processes are crucial to customer satisfaction and inventory cost control. Even if your product line is extensive and complex, SAP Business One will provide you with comprehensive inventory and production management functionality to meet your business needs. Discover how SAP Business One will enable your business to optimize and streamline your entire inventory and production management process. Manage detailed item, inventory, and warehouse data; record and track inbound, outbound, and inter-warehouse stock movements; and plan and release production orders based on comprehensive material requirements planning.**

The sophisticated warehouse and inventory management tools in SAP Business One allow you to manage your supply chain and enhance customer satisfaction by providing reliable information about inbound and outbound shipments as well as current inventory levels.

Manage item master data using various costing models to get an up-to-date insight into your inventory value by warehouse or by item. Use integrated production functionality to manage all types of bills of materials and to efficiently process production orders.

SAP Business One provides you with integrated accounting functionality, so you can be assured that your warehouse management and your financial accounting data are consistently synchronized. Changes to item cost and product prices are immediately and automatically considered and the inventory value is recalculated based on the assigned valuation model.

Use the *MRP Wizard* in SAP Business One to effectively plan material requirements for complex, multi-level production processes.

SAP Business One has powerful reporting tools to meet any aspect of your warehouse and inventory reporting needs. Detailed reports on item transactions and valuations, inventory counts, production planning and material requirements provide you with the information needed to make quick and effective management decisions.

Warehouse and Production Management in SAP Business One		
Warehouses and Inventories	Stock Movements	Production and MRP
Manage inventories in multiple warehouses and locations using FIFO, moving average, or standard costing	Record goods receipts and goods issues, and track stock transfers between warehouses	Create and maintain multi-level bills-of-materials (BOM)
Maintain units of measure and item prices in local and foreign currency	Enable consignment, drop-ship, and back-to-back orders	Issue and release production orders manually and by backflush
Implement serial and batch number management	Use Pick & Pack Manager to fill deliveries	Plan material requirements using the MRP wizard
Generate comprehensive item list, transaction, and valuation reports	Perform inventory and cycle counts	Globally maintain prices for BOMs with parent and child items

Figure 1: Features of SAP Business One Warehouse and Production Management

### Warehouses and Inventories

SAP Business One lets you manage individual warehouses as well as group multiple warehouses into one location. Perform instant availability checks and track item stock levels, such as *committed*, *ordered*, or *available* items, by warehouse, individual item, and item group.

Comprehensive item master data management in SAP Business One lets you maintain item numbers and descriptions with detailed purchasing, sales, and inventory data. Multiple units of measure and factors can be used when managing base, purchasing, packaging, and sales units, in order to streamline picking, packing, and final delivery.

Item prices integrating multiple currencies can be based on several price lists, such as retail and wholesale, which are applied automatically to transactions with vendors and customers. Special pricing tools allow you to automatically apply volume, cash, and account discounts.

SAP Business One manages both serial and batch number items. Generate and assign batch numbers for goods receipts and draw from available batches when goods are issued. Serial numbers can be manually generated upon goods receipt, but barcode integration in SAP Business One allows you to assign and use barcode labels to simplify serial number management. Transaction reports show all transactions affecting batches and serial numbers.

Costing methods, such as FIFO, moving average, and standard, are fully integrated. Inventory valuation and last purchase price per item are automatically updated after each transaction.

### Stock Movements

SAP Business One records goods receipts and goods issues in any warehouse. By integrating individual item prices or price lists, you simultaneously update inventory valuation. SAP Business One transparently integrates inventory and accounting transactions. As a result, stock levels are adjusted, inventory accounts credited/debited, and applicable inventory variances accounted for as soon as a stock movement is posted. Inventory transfer functionality allows you to easily transfer items from one warehouse to another.

The SAP Business One *Pick & Pack Manager* lets you to easily create pick lists and pull the listed items from the inventory .

Consignment and drop-ship orders are easily processed by creating dedicated customer warehouses.

Perform cycle counts while orders are received and shipped, so that business activity does not have to be postponed to perform stocktaking. If the cycle count shows a level below the minimum stock level or a stock level discrepancy, the powerful SAP Business One alerts manager notifies warehouse and purchasing managers.

The comprehensive inventory count functionality allows you to record initial quantities, perform inventory tracking, and post stock differences by warehouse, item, item group, vendor, or any custom defined properties. Stocktaking sheets are generated and printed easily using the SAP Business One *Print Layout Designer (PLD)*.

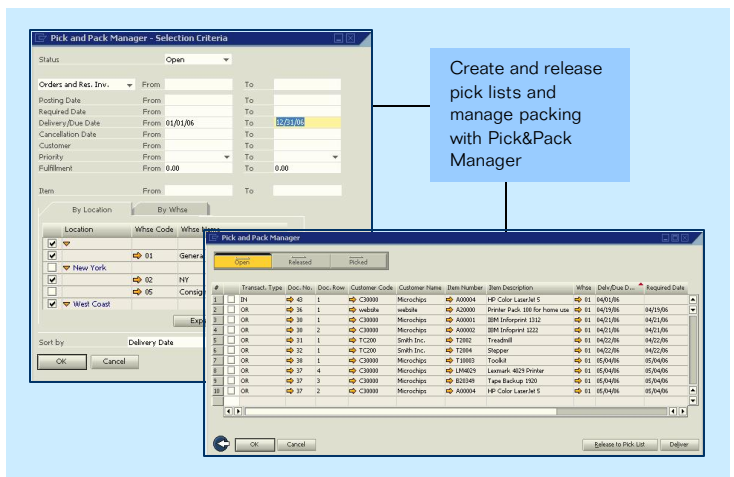


Figure 2: SAP Business One Pick & Pack Manager

### Production and MRP

SAP Business One simplifies definition and management of production, assembly, sales, and template bills-of-materials (BOM). You can store bill-of-materials number, description, warehouse, and item composition in easy steps, while recording per item quantities, production issue methods, prices, and comments at each level. When you add a bill-of-material to purchase, production, or sales orders, pricing and quantities are automatically recorded for both the product and its components.

SAP Business One supports standard, special, and disassembly production orders. Bills-of-material can easily be entered into production orders so that item availability, warehouse location, and issue method are automatically recorded.

By storing a production due date, production scheduling can be managed using SAP Business One alerts management.

Material requirements planning (MRP) in SAP Business One allows you to plan material requirements for complex, multi-level production processes. Using the SAP *MRP wizard*, you can create MRP scenarios specifying planning horizon, items, and data sources. Once defined, MRP scenarios can be saved and reused for subsequent planning phases.

The MRP module will automatically generate production and purchase orders needed to manufacture a final product in the quantities and time specified by the production schedule, taking into consideration all requirements for product components.

### Production and Warehouse Reports with XL Reporter

XL Reporter in SAP Business One allows you to create sophisticated warehouse and production management as well as materials requirements planning reports. Reports are generated in SAP Business One and displayed in MS Excel™ templates as standard reports or as dashboards. Use predefined templates to issue inventory status, audit, and valuation reports, as well as item and warehouse transaction lists. XL Reporter also allows you to generate production reports, such as production orders by status and bill-of-materials reports.

Data in reports is refreshed in regular, predefined intervals, so you are constantly updated on inventory levels and production schedules.

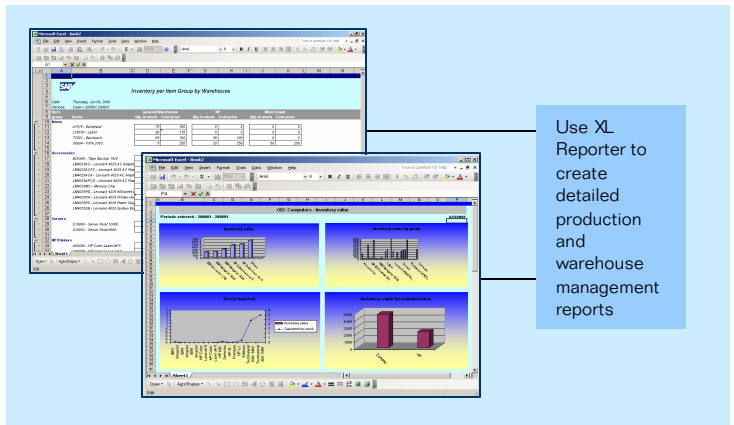


Figure 3: XL Reporter production report samples

SAP *Drag&Relate* technology and the standard MS Excel™ interface allow you to create your very own reports in a few easy steps with the *Report Definition Wizard*. For more advanced reporting, use the *Report Designer* to integrate custom queries, parameters, formulas and layouts. The *Report Organizer* allows you to execute and manage your reports and efficiently distribute them to other users through easily created report books.

To learn more about how SAP Business One can empower your warehouse management and production organization to grow your business and effectively service your vendors and customers, call your SAP representative today or visit us on the Web at [www.sap.com/smb](http://www.sap.com/smb).

\* 2006 by SAP AG. All rights reserved. SAP, R/3, mySAP, mySAP.com, xApps, xApp, SAP NetWeaver, and other SAP products and services mentioned herein as well as their respective logos are trademarks or registered trademarks of SAP AG in Germany and in several other countries all over the world. All other product and service names mentioned are the trademarks of their respective companies. Data contained in this document serves informational purposes only. National product specifications may vary. Printed on environmentally friendly paper. These materials are subject to change without notice. These materials are provided by SAP AG and its affiliated companies ("SAP Group") for informational purposes only, without representation or warranty of any kind, and SAP Group shall not be liable for errors or omissions with respect to the materials. The only warranties for SAP Group products and services are those that are set forth in the express warranty statements accompanying such products and services, if any. Nothing herein should be construed as constituting an additional warranty.